



TAI-SAW TECHNOLOGY CO., LTD.

No. 3, Industrial 2nd Rd., Ping-Chen Industrial District,
Taoyuan, 324, Taiwan, R.O.C.

TEL: 886-3-4690038 FAX: 886-3-4697532

E-mail: tstsales@mail.taisaw.com Web: www.taisaw.com

Approval Sheet For Product Specification

Issued Date:

Product Name: SAW Filter 403.55MHz SMD5X5mm

TST Parts No.: TA0309A

Customer Parts No.: _____

Company: _____
Division: _____
Approved by : _____
Date: _____

Checked by: Jacky Huang

Approval by: Francis Chen

Date: 2003/10/31



TAI-SAW TECHNOLOGY CO., LTD.

No. 3, Industrial 2nd Rd., Ping-Chen Industrial District,
Taoyuan, 324, Taiwan, R.O.C.

TEL: 886-3-4690038 FAX: 886-3-4697532

E-mail: tstsales@mail.taisaw.com Web: www.taisaw.com

SAW Filter 403.55 MHz

MODEL NO.: TA0309A

REV. NO.:1

A. MAXIMUM RATING:

1. Input Power Level: 10 dBm
2. Operating Temperature: -40°C to +85°C
3. Storage Temperature: -40°C to +85°C

RoHS Compliant
Lead free
Lead-free soldering

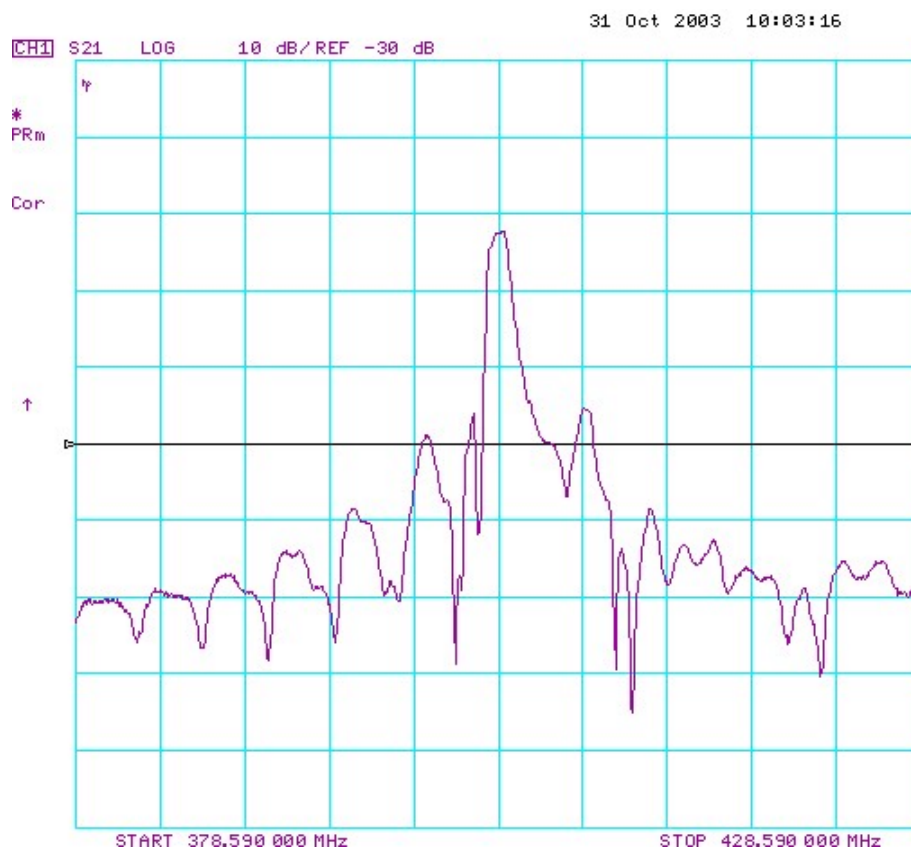
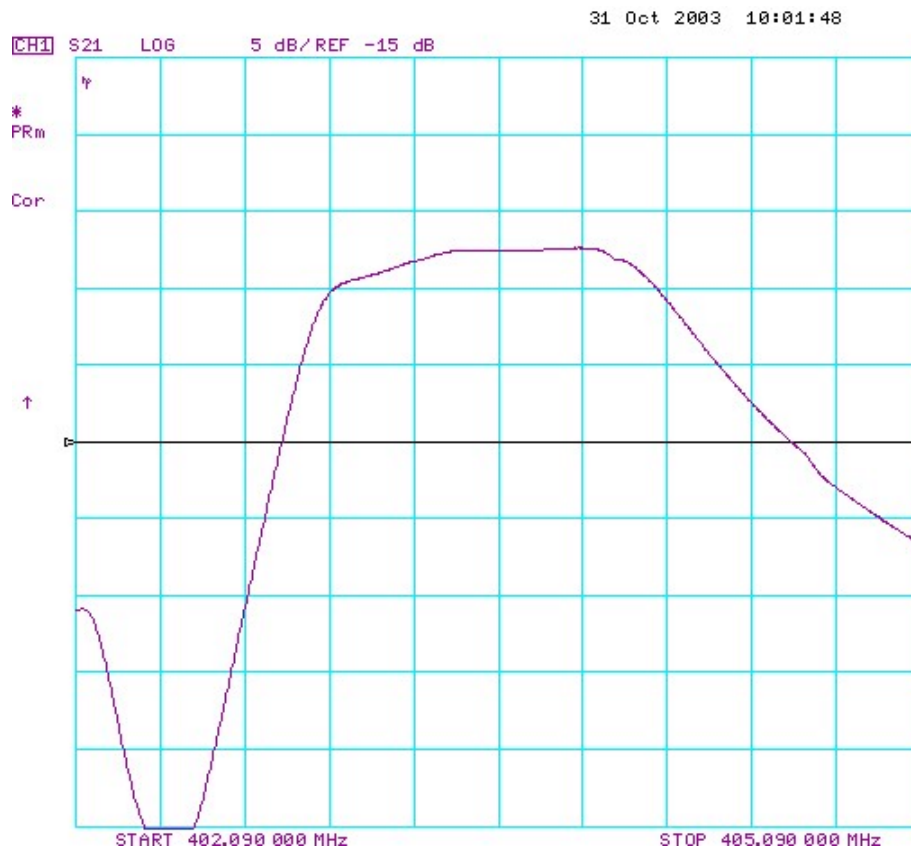
B. ELECTRICAL CHARACTERISTICS:

Reference temperature: TA = 25°C

Item	Min.	Typ.	Max.	Note
Center frequency F_c (MHz)	-	403.59	-	1
Minimum I.L. 403.43~403.75 MHz (dB) IL_{min}	-	2.4	4.0	
Pass band (relative to IL_{min})				
403.33~403.85 MHz (dB)	-	2.0	3.0	1
403.27~403.91 MHz (dB)	-	3.0	6.0	
Pass bandwidth (relative to IL_{min}) BW_3 (KHz)	-	1150	-	
Attenuation:(relative to IL_{min}) (dB)				
10 ~ 370 MHz (dB)	40	50	-	
370 ~ 393.5 MHz (dB)	35	42	-	
393.5 ~ 400.5 MHz (dB)	20	25	-	
400.5 ~ 402 MHz (dB)	20	25	-	1
405.6 ~ 405.8 MHz (dB)	18	23	-	
405.8 ~ 410 MHz (dB)	18	23	-	
410 ~ 420 MHz (dB)	25	32	-	
420 ~ 600 MHz (dB)	35	42	-	
Impedance at F_c ; Input $Z_{IN}=R_{IN}/C_{IN}$ Output $Z_{OUT}=R_{OUT}/C_{OUT}$	346Ω // 3.8 pF 346Ω // 3.8 pF			
Turnover To (deg.C)				

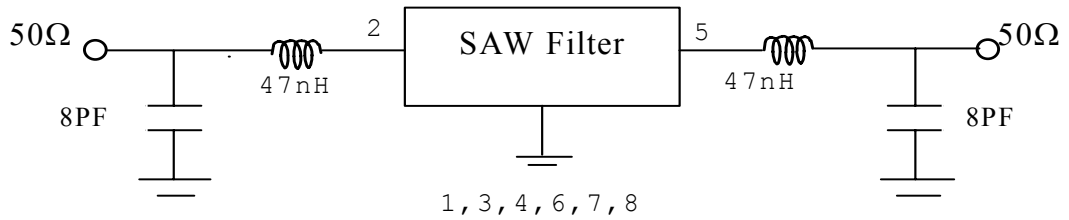
Note1. The standard definitions is in JIS C 6703

C. FREQUENCY CHARACTERISTICS:

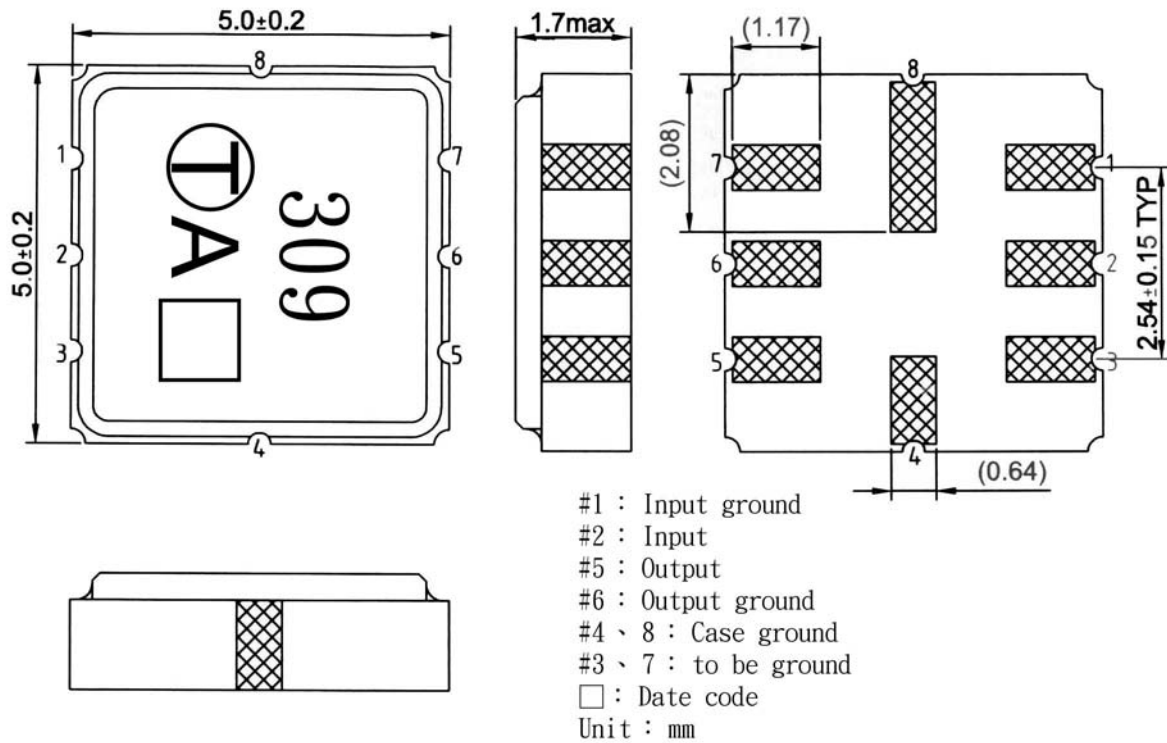


D. MEASUREMENT CIRCUIT:

HP Network analyzer

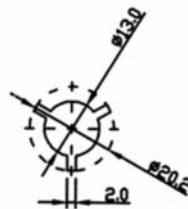
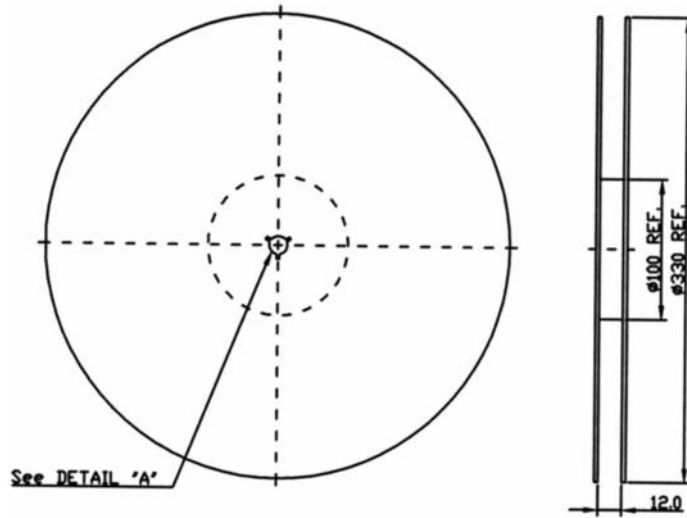


E. OUTLINE DRAWING:

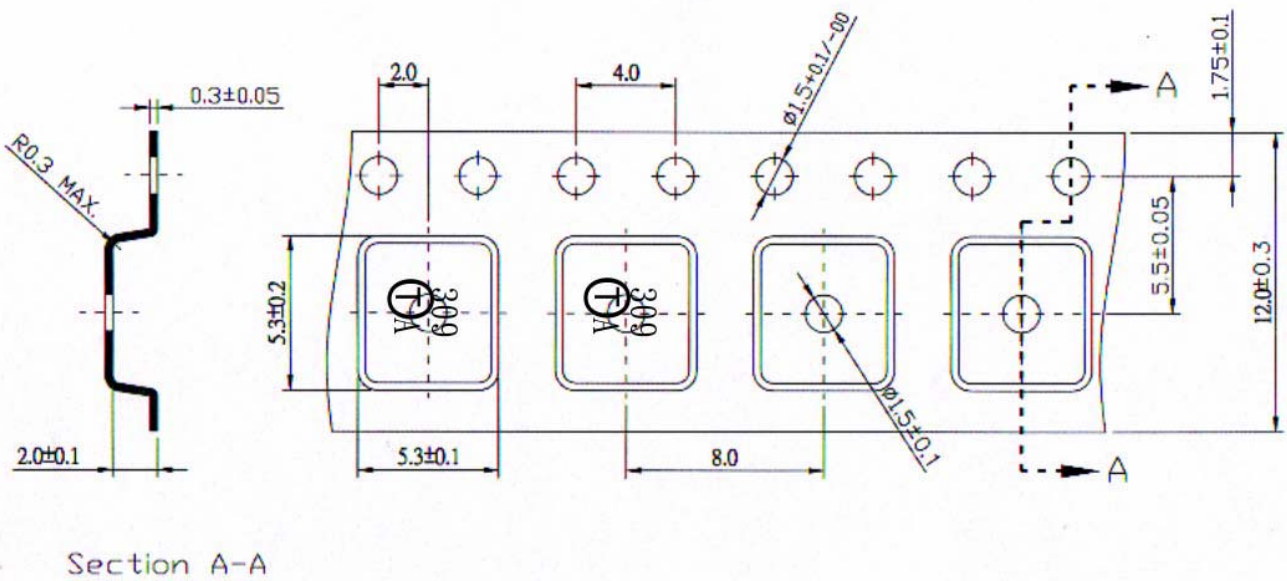


F. PACKING:

1. REEL DIMENSION



2. TAPE DIMENSION



Section A-A